

FEMA's Role in Technical Clearinghouses-Federal Agency Coordination

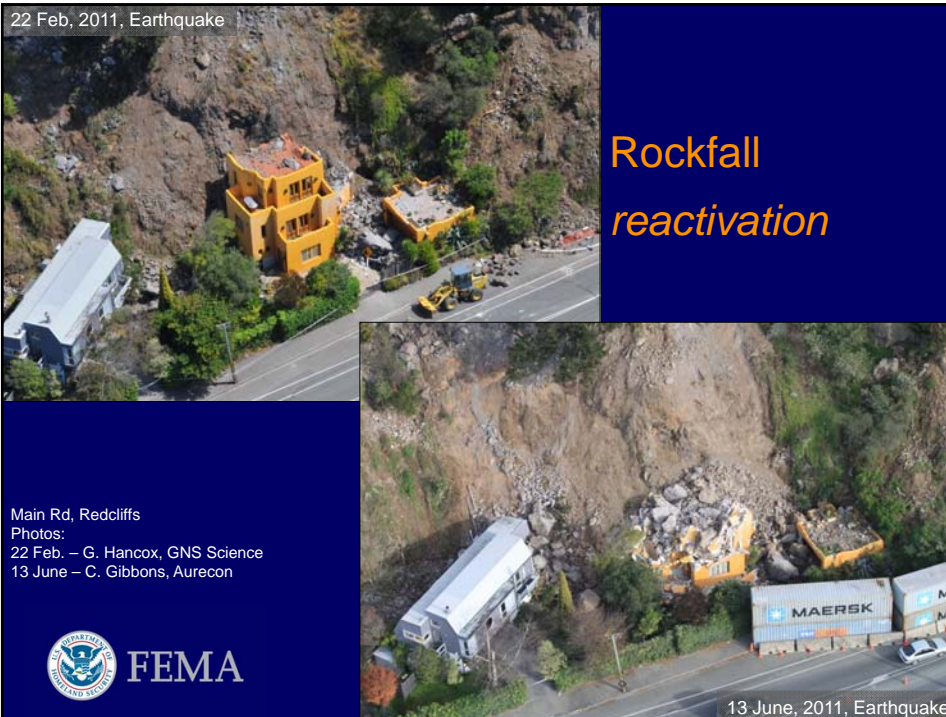
New USGS MOU: Recent breakthroughs

Mission Assignments: Life Saving and Life Sustaining

- Expediting assistance, damage regions (landslide, liquefaction, fault rupture)
- Monitoring-early warning, slope stability
- Unsafe areas delineations
- Remote sensing data interpretation
- Rock fall hazard mitigation (\$75M in CC)



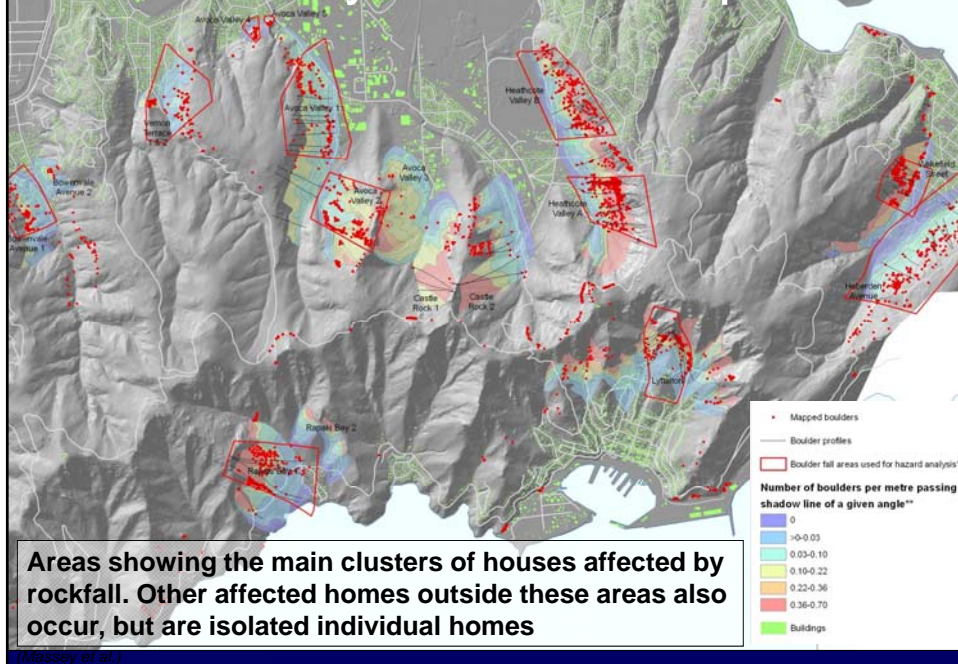
Rockfall



Complex (Deeper Seated) Failures

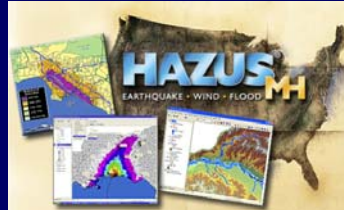


Probability of rockfall impact

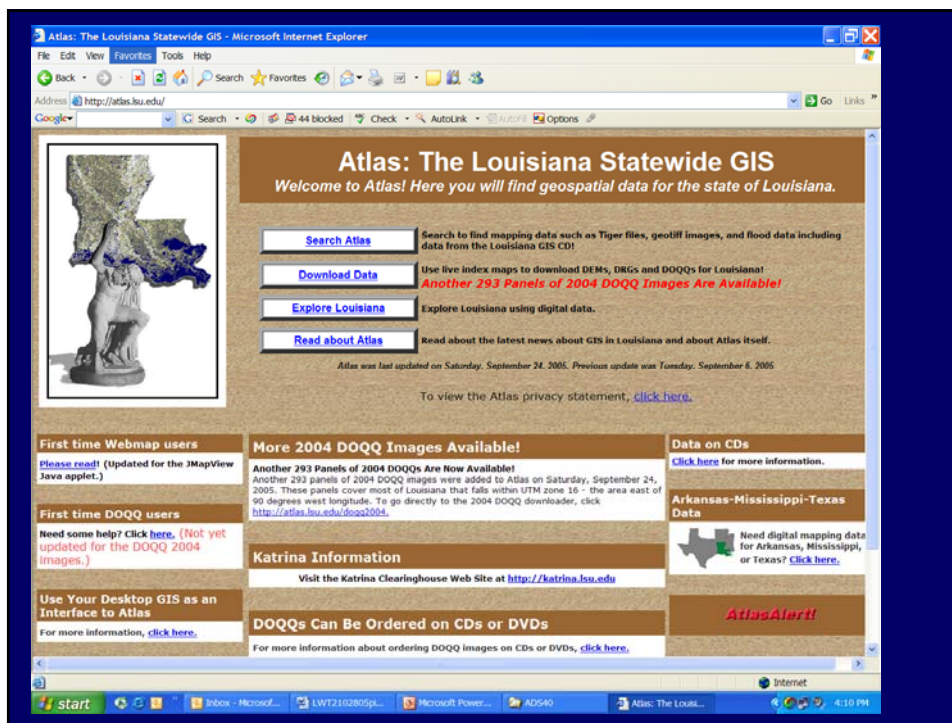


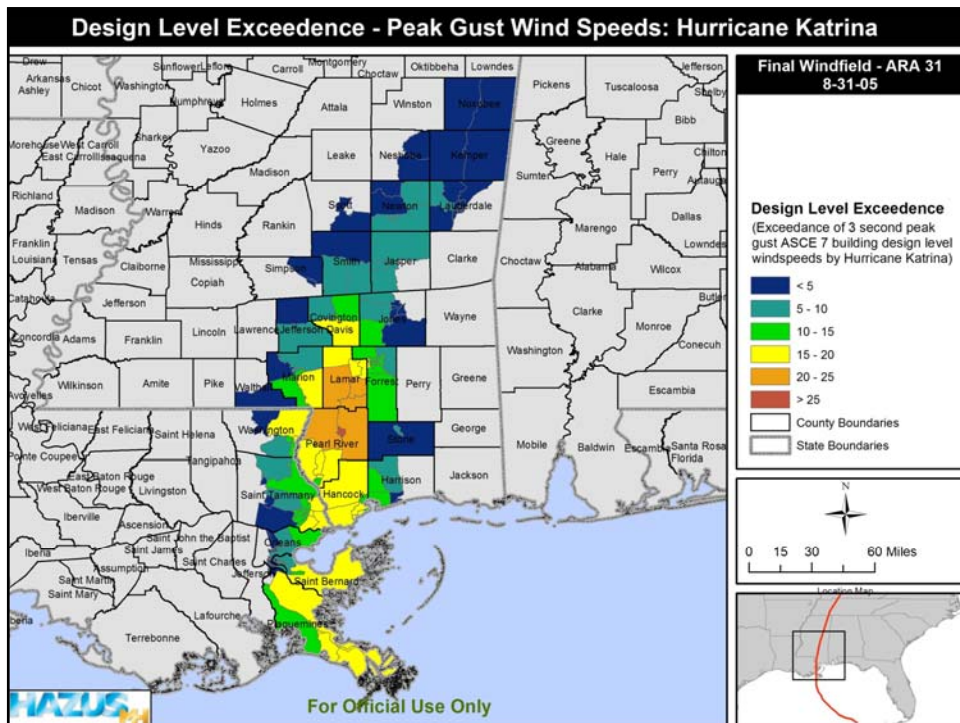
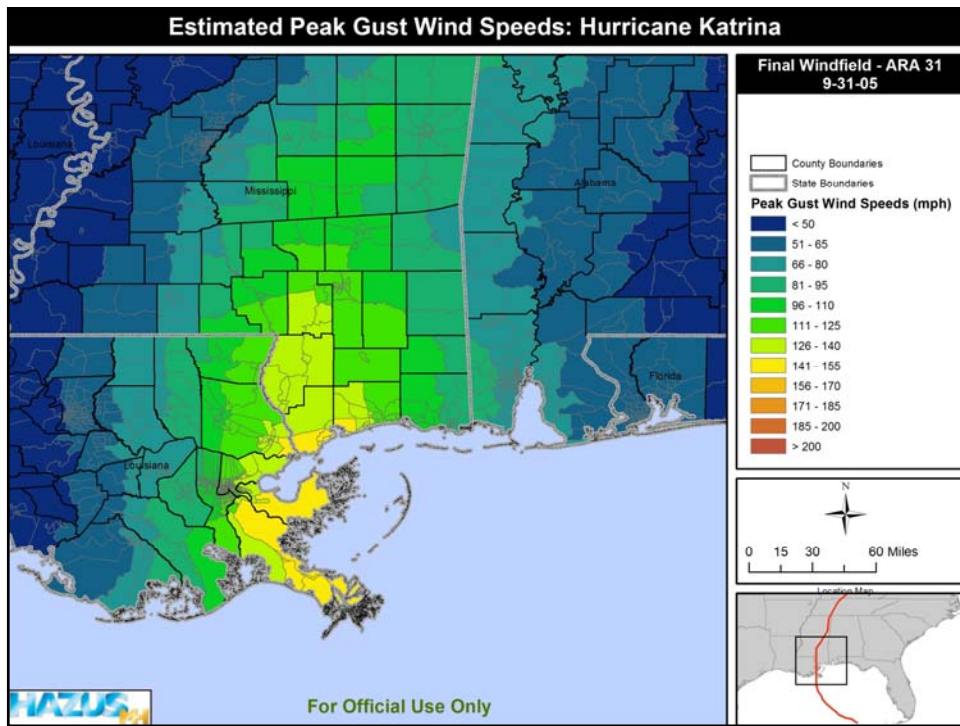
FEMA's Role in Technical Clearinghouses-Katrina Example

- Structure within Disaster Framework: ESF5 Planning
- Clearinghouse setup
- GIS and RS support
- Data access
- Modeling support
- Coordinate research
- Mitigation Assessment Team
- Support mitigation programs (code adoption, education and outreach)



FEMA





*Ground truthing
of depth grid.
Dependent on
LIDAR
Expedited NFIP
claims.*



FEMA

Clearinghouse Partners

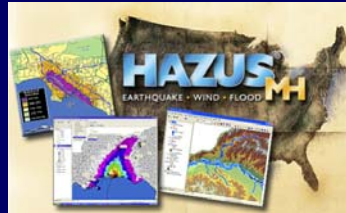
- Collaborators
 - CCT (20 Tb server)
 - CADGIS
 - WHO Lab
 - Center for Public Health Impacts of Hurricanes
 - Google
 - LSU Hurricane Center
 - LA Geologic Survey
 - Governor's Oil Spills Office
 - Dept. of GEOG & ANTH
 - LAGIC
 - LA Sea Grant
 - Intergraph Corp
 - Universities (UNO-Tulane)
- DATA storage
- Internet access to information
- Download capabilities
- Software (Terrashare)
- Training Programs
- Research space in CADGIS



FEMA

Clearinghouse Donated Services

- LSU Faculty and Staff Support
- 20 terrabyte LSU server
- Google server, hardware, software
- NGA Clearview Satellite Imagery
- Pictometry, Image America, G&E
- Intergraph – Raster Server
- FEMA/DHS Funding (LA, MS, TX)



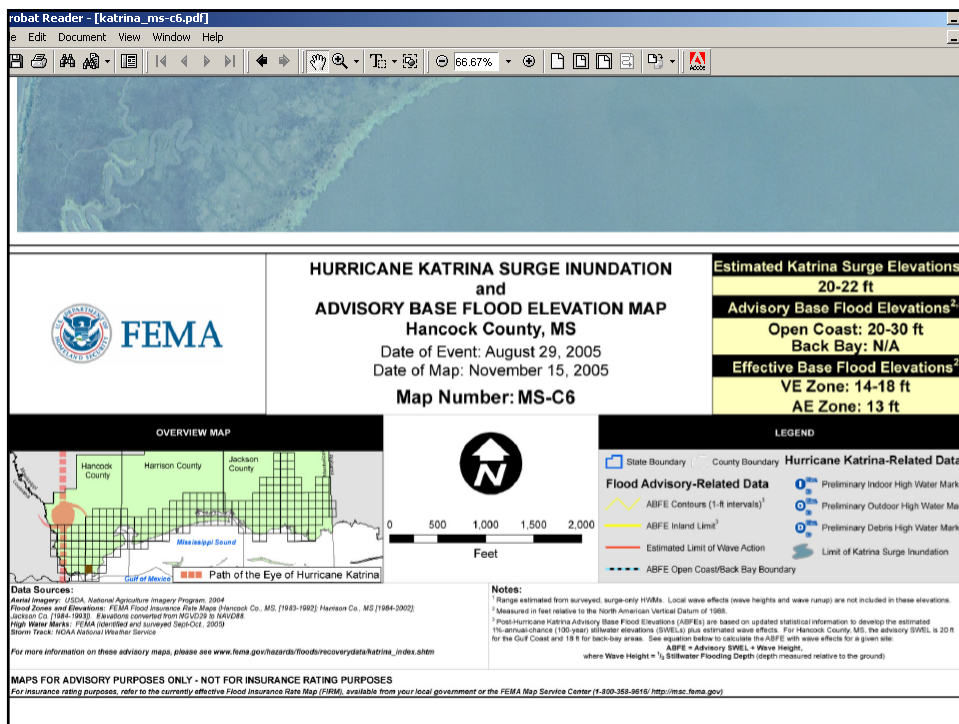
FEMA

Application of Google Extension

- Rapid post event imagery (NOAA)
- 911 calls from all 50 States
- Depth Grid
- Shelter locations
- LSU vet school pet tracking
- Allowed easy access to GIS data
- Ease of making: .kml, .kmz's, ShakeMap



FEMA



Edit View Favorites Tools Help

Back Search Favorites

http://katrina.lsu.edu/

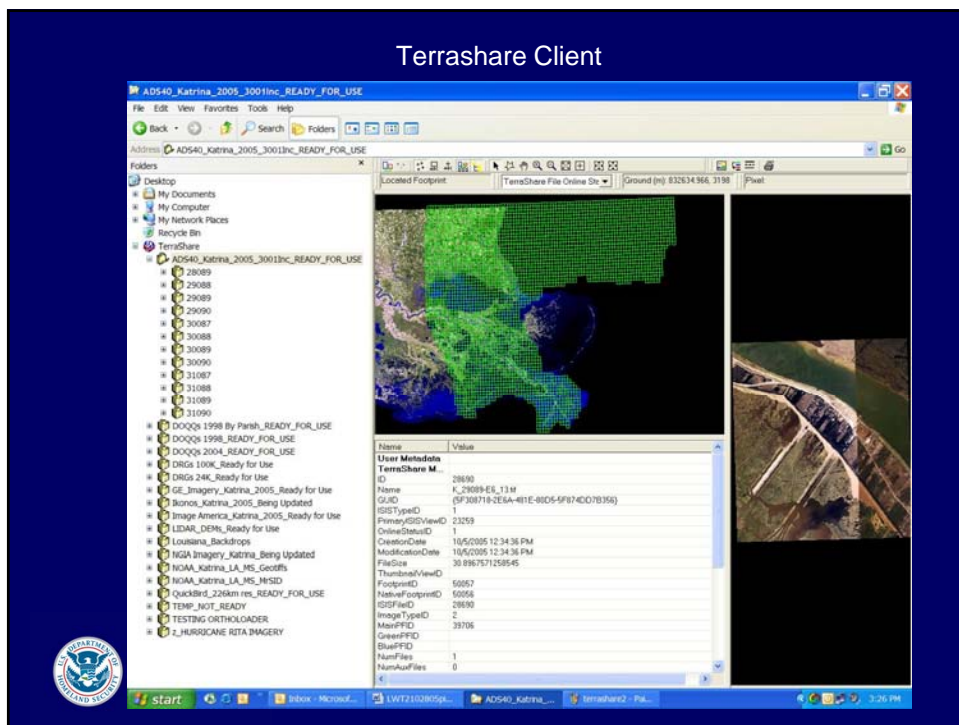
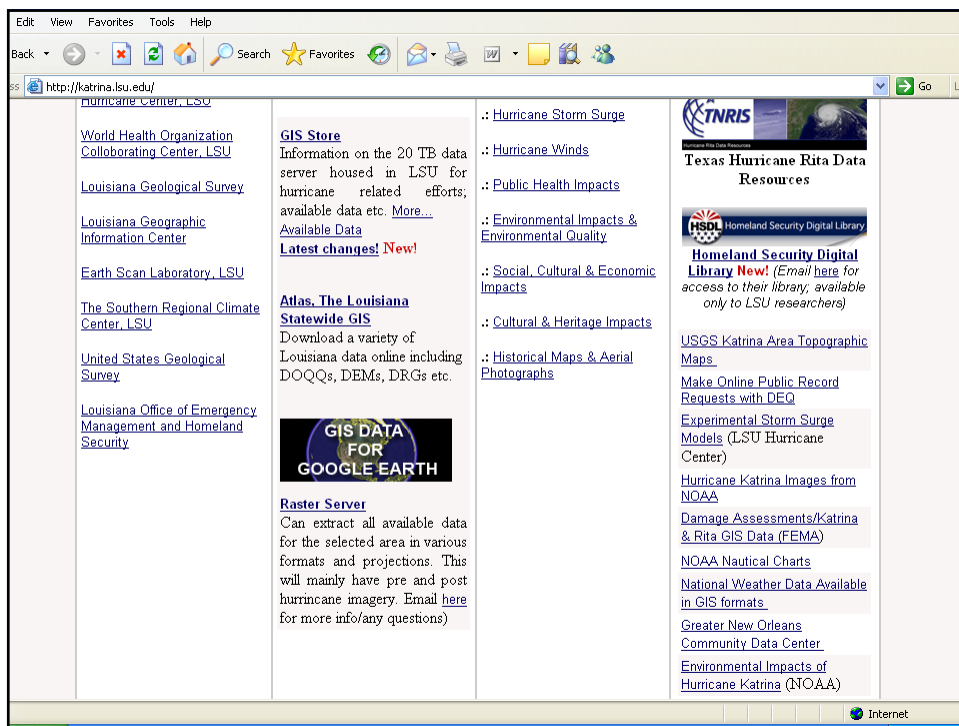
HURRICANE KATRINA & RITA

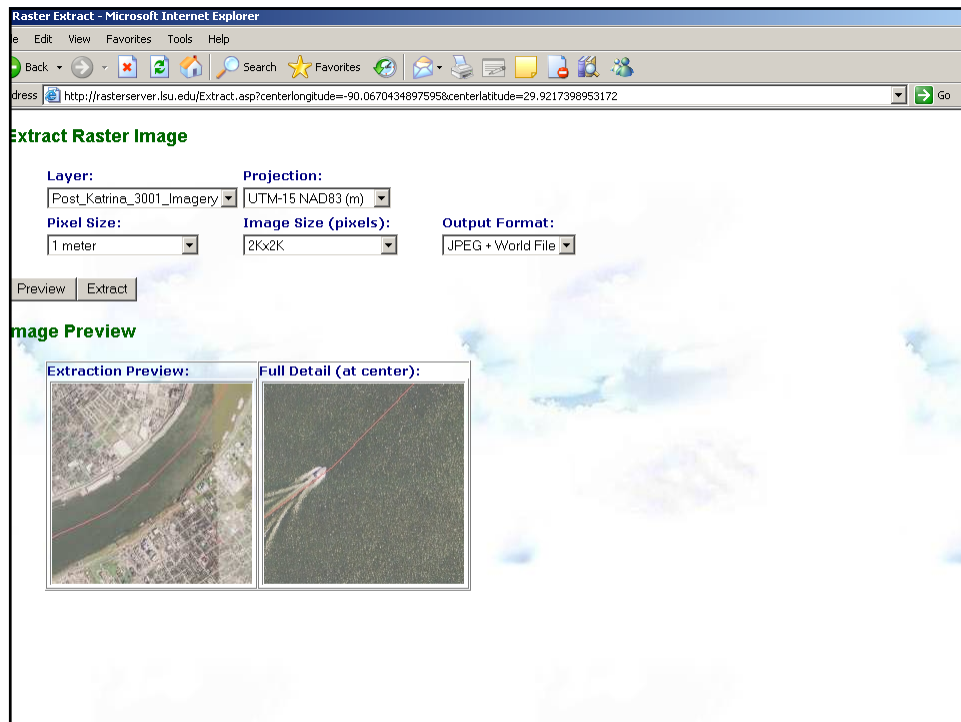
Clearinghouse Cooperative

General	Data	Contribute	More Information
<p>ABOUT THE SITE</p> <p>This clearinghouse has been established at the Louisiana State University, Baton Rouge to facilitate the collection, dissemination, and archiving of data related to Hurricane Katrina and Rita. Katrina made landfall in Louisiana on Monday, August 29, 2005 and Rita made landfall on September 24, 2005.</p> <p>ALL ABOUT LSU GIS CLEARINGHOUSE & SERVICES PROVIDED</p> <p>SPONSORS</p> <p>Louisiana State University</p> <p>CADGIS Research Laboratory, LSU</p> <p>Federal Emergency Management Agency</p>	<p>DOWNLOADS</p> <p>Map Products, Reports & Data Downloads</p> <p>FEMA Individual Assistance (IA) by block group Maps New! Added 05/03/06</p> <p>Maps of building structures for Southeast/Southwest LA, Calcasieu etc New! Added 04/25/06</p> <p>Data in KMZ format now available for GOOGLE EARTH: Cellular data etc New! Added 04/21/06</p> <p>Wooden Structures by Census Block for Orleans Parish Added 04/18/06</p> <p>Proceed to download...</p>	<p>RESEARCH</p> <p>This section will be dedicated to providing information on research activities related to hurricanes Katrina & Rita.</p> <p>More Info... Updated 05/25/06!</p> <p>CONTACT</p> <p>Contact information for various programs areas are available here.</p> <ul style="list-style-type: none"> Program Coordination FEMA Coordinators Remote Sensing Webmaster/GIS Data Mapping Sciences & 	<p>NEWS</p> <p>INDEX OF AVAILABLE DATA IN GIS STORE, New! Updated 05/04/06</p> <p>Data on population estimates available now in Research section!</p> <p>PHOTO GALLERIES</p> <p><i>View images from hurricanes Katrina & Rita</i></p> <p>USEFUL DATA LINKS</p>

p://katrina.lsu.edu/default.asp

Internet





Long Term Commitment



- Permanent preservation of perishable data.
- Preserve access to hurricane data (Katrina, Rita, & others)
- Assist local communities in both hazard mitigation and recovery (SeaGrant/LandGrant)



FEMA

Lessons/Recommendations for Clearinghouses

- Clearinghouses can play a role in all disaster types and Phases of a disaster
- Incorporate into JFO Disaster Operations-planning, mitigation, long-term recovery, MAT Teams
- Educate FCO's and Planning Chiefs (develop "fact sheet") or no FEMA funding-Disaster's Journal paper
- GIS/RS plays significant role-engage State GIS coordination bodies (NSGIC)
- Pre-identify Privacy Act issues and requests-include sample requests in plan
- Long-term preservation, organization and access tools for perishable data



FEMA